

MINUTES OF THE MEETING OF THE CITY COUNCIL

held at the Council House, Nottingham,

on Monday 8 February 2010 at 2.00 pm

ATTENDANCES

✓ Councillor Packer	Lord Mayor
✓ Councillor Ahmed	✓ Councillor A Khan
✓ Councillor Akhtar	Councillor G Khan
✓ Councillor Arnold	✓ Councillor Klein
✓ Councillor Aslam	✓ Councillor Lee
✓ Councillor Benson	✓ Councillor Liversidge
✓ Councillor Bryan	✓ Councillor Long
✓ Councillor Bull	Councillor MacLennan
✓ Councillor Campbell	✓ Councillor Malcolm
✓ Councillor Chapman	✓ Councillor Marshall
✓ Councillor Clark	✓ Councillor Mellen
Councillor Clarke-Smith	Councillor Mir
✓ Councillor Collins	✓ Councillor Morley
Councillor Cresswell	✓ Councillor Munir
Councillor Culley	Councillor Newton
✓ Councillor Davie	✓ Councillor Oldham
✓ Councillor Dewinton	Councillor Parbutt
✓ Councillor Edwards	✓ Councillor Price
Councillor Foster	✓ Councillor Smith
✓ Councillor Gibson	✓ Councillor Spencer
✓ Councillor Griggs	✓ Councillor Sutton
✓ Councillor Grocock	✓ Councillor Trimble
✓ Councillor Hartshorne	✓ Councillor Unczur
Councillor Heppell	Councillor Urquhart
✓ Councillor Ibrahim	Councillor Watson
✓ Councillor James	✓ Councillor Wildgust
Councillor Johnson	✓ Councillor Williams
✓ Councillor Jones	✓ Councillor Wood

59 APOLOGIES FOR ABSENCE

Apologies for absence were received from Councillors Clarke-Smith, Culley, Foster, Heppell, Johnson, G Khan, MacLennan, Mir, Newton, Parbutt, Urquhart and Watson.

60 DECLARATIONS OF INTERESTS

No declarations of interests were made.

61 QUESTIONS AND PETITIONS FROM MEMBERS OF THE PUBLIC

The following petitions were submitted:-

(a) Councillor Morley – Dangerous Pedestrian Crossing, Russell Drive Near Trowell Road

Councillor Morley submitted a petition to the Lord Mayor on behalf of local residents, seeking action on a dangerous pedestrian crossing on Russell Drive near its junction with Trowell Road. The petition contained 209 signatures.

(b) Councillor Spencer – Objections to the closure of Wilford Library

Councillor Spencer submitted a petition to the Lord Mayor on behalf of local residents and users of Wilford Library objecting to the closure of Wilford Library. The petition contained 757 signatures.

(c) Councillor Sutton – Objections to the premature closure and redevelopment of Victoria Leisure Centre

Councillor Spencer submitted a petition to the Lord Mayor on behalf of local residents and users of Victoria Leisure Centre, objecting to the premature closure of the facility and its redevelopment. The petition contained 2,833 signatures plus 233 further letters of objection.

Public Questions

No public questions were submitted.

62 MINUTES

RESOLVED that the minutes of the meeting held on 14 December 2009, be confirmed and signed by the Lord Mayor.

63 OFFICIAL COMMUNICATIONS

The Chief Executive reported the following communications:-

British Association for Community Child Health Awards

GO 4 IT! CITY'S Childhood Obesity Project was awarded Best Abstract in the BACCH (British Association For Community Child Health) Trent Prize in December 2009.

GO 4 IT! also won a Star Award in the Partnership Category. STAR is the Staff Turning Aspirations Into Reality; they recognise and celebrate teams or individuals who have gone that extra mile or really made a difference to health care in Nottingham City. GO 4 IT! is a partnership project with NHS Nottingham, Notts County Football Club and Nottingham City Council.

London 2012 Organising Committee Awards

Championing Notts Sports Volunteering Project and Nottingham City's Free Swim Initiative have been awarded the Inspire Award from London 2012 Organising Committee (LOCOG). The Inspire Award is awarded to fresh, vibrant and truly exceptional projects and events inspired by the 2012 games.

64 MOTION IN THE NAME OF COUNCILLOR CAMPBELL
- SMOKELESSNESS AND HEALTHY LIVING CHOICES

Prior to the debate on the motion the Chief Executive, Jane Todd, together with Stuart Short (Nottingham Youth Council), Ryan Richards, Kirsty Fisher and Clare Crawford (a gold medallist 2009 Paralympian) (Speak Up Youth Parliament) addressed the meeting on their experiences from the workshop events held in support of the motion.

MOVED by Councillor Campbell, seconded by Councillor Klein:-

"This Council recognises that reducing smoking and maintaining a healthy weight are important long-term strategic priorities for Nottingham City.

This Council thanks the members of the public and workers who have participated in this morning's "Putting Health at the Heart of Nottingham" event in the Council House and welcomes the actions identified by all delegates.

This Council will consider all suggestions raised today in its implementation of the Sustainable Community Strategy.

We commit to establishing a Working Group which will look at issues that will be raised from the debate and suggestions from local people and will feedback to the Health and Adult Social Care Select Committee."

After discussion the motion was put to the vote and was carried and the Council RESOLVED that:-

"This Council recognises that reducing smoking and maintaining a healthy weight are important long-term strategic priorities for Nottingham City.

This Council thanks the members of the public and workers who have participated in this morning's "Putting Health at the Heart of Nottingham" event in the Council House and welcomes the actions identified by all delegates.

This Council will consider all suggestions raised today in its implementation of the Sustainable Community Strategy.

We commit to establishing a Working Group which will look at issues that will be raised from the debate and suggestions from local people and will feedback to the Health and Adult Social Care Select Committee."

65 QUESTIONS

Questions to the Nottinghamshire Police Authority.

There were no questions to the Chair of the Nottinghamshire Police Authority.

Victoria Leisure Centre

Councillor Sutton asked the following question to the Portfolio Holder for Leisure, Culture and Customers:-

"At what point in the consultations the Council has undertaken about the Victoria Leisure Centre did the Council and residents agree to closing a viable, functioning facility before planning approval has been obtained and before there is a development timetable for a replacement? Can they not see that closing the centre in one of the most deprived wards in the City before there is a replacement is in direct contradiction to the aspirations of the health debate today?"

Councillor Trimble replied as follows:-

Thank you Lord Mayor and can I thank Councillor Sutton for his question.

First of all, let's be very clear that the very fact we are investing over £9 million in a new leisure facility will play a substantial part in improving the fitness and health of more local people, in a deprived area of the City. Opening new or improved leisure facilities has been shown to vastly increase the number of people using our facilities. The new Victoria Leisure Centre will provide significantly improved modern leisure facilities on the east side of the City and also help kick-start the wider regeneration of the area which will also bring wider benefits to local people.

From the very outset when the original closure decision was reversed by the Executive Board it was always intended to move as quickly as possible. A large consultation process was carried out by the Area Committee. Three options for the future development of the Victoria Leisure Centre were consulted upon with local residents and option C was chosen. This was ratified by the Executive Board of the Council in April 2009. At that time the decision was made by the Executive Board to redevelop the Victoria Leisure Centre. A preliminary timetable for the delivery of the scheme was provided; the design team have been working closely to this time line to ensure that the scheme was being developed without any unnecessary delays. As there is no change of use to the Centre, to the site, the only objections are likely to be on aesthetics and that will be down to the members of Development Control Committee to sort out along with the architects. We will be continuing to operate the Victoria Leisure Centre until close of play on 1 April 2010 and plans are in place to ensure the facility remains operational until that date.

Consultation during the feasibility study, which included Save Victoria Baths campaigners, concluded that any new development should be located on the existing site and not on any other location. It is therefore necessary to close the existing Leisure Centre, in order to build the new facility. The existing facility is without doubt a declining facility. Our experience tells us that a much improved facility vastly increases usage, so the quicker we can get this done the better the health debate will be for the people of St. Ann's and Sneinton.

The new facility will improve health in the area for over 30 years into the future. The present facility is extremely poor and certainly not viable for the future. Even just spending the running costs is throwing good money after bad money, but then again I understand, I have spoken to lots of people who use Leisure Centres, some people like to go to a poorly attended Leisure Centre. There's much more room in the pool.

Lord Mayor, customers will have alternative options at all of our leisure centre's with the closest ones being at Portland Leisure Centre and the brand new Djanogly Community Leisure Centre in Forest Fields, which is set to open within a few days of the Victoria Centre closure.

Of course, if Councillor Sutton has his way we would not be building a brand new Victoria Leisure Centre.

Thank you.”

Victoria Leisure Centre expected development on the site

Councillor Sutton asked the Portfolio Holder for Leisure, Culture and Customers the following question:-

“Given that Councillor Trimble has already stated that the designs for a replacement facility for the Victoria Leisure Centre are not yet finalised and that these still have to be submitted for planning approval, when is it expected that development on the site will start? Why does he not keep Victoria Leisure Centre open until it is actually necessary to close it?”

Councillor Trimble replied as follows:-

“Thank you Lord Mayor and can I thank Councillor Sutton for his question.

Designs will be ready to submit for planning permission very soon and the Victoria Leisure Centre will not be closed any longer than it needs to. A programme in consultation with Inspired Spaces (the development team of the Local Education Partnership) alongside the construction partner Carillion, has been developed. This has looked to minimise the build programme. The necessary parallel investigations and preparation work of the building will happen as we are doing that, that’s work that needs to happen. This has enabled us to ensure that as soon as planning permission is granted we are able to start work immediately on site without having any other delays, such as necessary statutory notices and undertaking formal necessary consultations with our employees. Investigative work on the site will begin immediately. By following this programme we are able to ensure that the Leisure Centre development also runs in conjunction with the development programme for the new Sneinton Square.

Of course, if Councillor Sutton had his way we would not be building a new Victoria Leisure Centre.”

Costs of Running Victoria Leisure Centre

Councillor Sutton asked the Portfolio Holder for Leisure, Culture and Customers the following question:-

“What is the current net cost of running Victoria Leisure Centre and what is the projected net cost of running the replacement Centre?”

Councillor Trimble replied as follows:-

“Thank you Lord Mayor and can I thank Councillor Sutton for his question.

The last complete year we have for full costs is the financial year of 2008/09. The running costs for Victoria Leisure Centre was £529,686. It is envisaged that 2009/2010 is likely to be more, but we don't have those figures. In the feasibility study produced for the new facility, the study has predicted a forecast running cost of £538,000 per annum, and this is shown for the full year 2012/2013. When inflation is added to the 2008/2009 running costs of the £529,686 the forecast within the Medium Term Financial Plan comes out slightly lower than running the current facility, with inflation.

It is also hoped that current forecast will be bettered but as actual costs are identified as the development progresses, our experience, again, in terms of new and improved leisure centres, is it increases vastly. If that does, it will bring in more income and, hopefully, reduce the running cost again.”

Victoria Leisure Centre Employment?

Councillor Sutton asked the Portfolio Holder for Leisure, Culture and Customers the following question:-

“How many less people will be employed when Victoria Leisure Centre is closed?”

Councillor Trimble replied as follows:-

“Thank you Lord Mayor, can I thank Councillor Sutton for his question.

At present time, individual formal consultation is taking place, with each member of staff. Each person has had two individual consultations, I am told, with HR management. The vast majority are likely to be offered alternative employment with the same or increased hours within Leisure Management. This, of course, has been made a bit easier with the

imminent opening of the new replacement Djanogly Leisure Centre on Gregory Boulevard. It is hoped that all staff will be accommodated with a like for like placement but, if this is not possible due to any single individual personal circumstances, then as a last resort, that other individual will be offered other opportunities within Leisure Management or, as a last resort, would be placed on the Council's redeployment register. In short, there are about 20 full time equivalents at Victoria Leisure Centre and we hope that there will be no less people employed at all.

Again, as a result of increased users. more sessions, when the new centre reopens it is more likely there would be far more sessions and it is likely that there would be more people employed and also a significant rebuild will create local employment during the construction period."

Council Tax

Councillor Grocock asked the following question to the Deputy Leader of the Council:-

"Would the Deputy Leader explain what the implications for the Council might be if the Conservative's promise to provide funding for a 0% Council Tax to any authority which limits its increase to 2.5% or below?
Thank you Lord Mayor. "

Councillor Chapman replied as follows:-

"As you can imagine, I have been following the saga of the Conservative Council Tax discount with interest, since its birth in 2008 at the Conservative Party Conference and that was the time when the average Council Tax seemed to be in the region of 3 to 5%, so 2.5% is quite attractive, as an incentive. By 2009, party conference, it disappeared as an issue. What came up as an issue were pensioner discounts and then, recently, re-emerged, and I think it has re-emerged for a very good reason, that the Conservatives had a series of cast iron policies. One of the cast iron policies was they were going to have a referendum on the European Treaty and they've since had to ditch that, and the other cast iron promises, were inheritance tax, married persons tax allowance and the Council Tax discount. Having dumped the European proposal, they were left with being unable to get out of any of the other proposals, these cast iron guarantees, and this is the one reason I think it has re-

emerged. but the problem with it is that it's a promise from other age, from 2008, pre-recession, and there are three particular difficulties with it; the first is, that it was at time when Council Taxes were often between 3 and 5%. This year, the vast majority of Council Tax increases, are likely to be below the 2.5% threshold which actually means that the Government will be picking up the total Council Tax increase, if it were happening now, and the chances are it will be very similar next year, for the whole of the nation, as the chances are very few authorities would not do something to get below the 2.5% threshold, especially given the position as we are in wage inflation and with price inflation. So the Government picks up the whole lot and that in itself is a problem. The second is, that it is actually, going to cost a lot more than they ever calculated. The calculations, and these are Treasury figures, were about £470m. Let's round it up to half a billion pounds out, and the third problem, I think it's the major problem, is that is it unclear how long they are going to subsidise it for, but lets just assume they subsidise it for two years. What happens in the third year? You've subsidised compound two years 2.5%, so even if we don't compound it, it gets a bit complicated. We talk about 5% increase and all of a sudden in the third year you take it off. It's like taking a lid of a pressure cooker and the impact on the Councils, that will have to face the consequences of that money being taken out, will be absolutely enormous, but then what is likely to happen, is that they will come in with capping so, therefore, you've actually got a financial crisis at the very time when you need, you are going to need increasing income for Child Protection, probably and, certainly, to cater for the elderly, particularly some of the dementia, some of the problems the elderly are facing, so you end up almost undermining the whole of the Council Tax system and, certainly, you are making Councils almost entirely dependent on government handouts to be able to survive. It ends up in an awful, awful, mess and I think it is a bad policy. I think it is left over and I think the policy that is being introduced to get a few votes at the election and it's one which, in the long term consequences, could undermine the whole of local government finance.

Thank you."

BBC

Councillor Liversidge asked the following question to the Leader of the Council:-

"Would the Leader comment on the report from Policy Exchange calling for the BBC to spend less on popular sporting events?"

Councillor Collins, the Leader of the Council, replied as follows:-

"Thank you Lord Mayor, can I thank Councillor Liversidge for his question.

The report, called Changing the Channel, argues that the amount the BBC spends on sports should be drastically cut. The implications of this report, were they implemented by Government, would have an effect in Nottingham as elsewhere in the country.

The Policy Exchange, the authors of the report, are closely linked to the Conservative Party and their views have in the past informed and helped develop emerging Conservative policy. Indeed, recent announcements by shadow ministers suggest that, in attacking the role and governance of the BBC, the Policy Exchange paper reflects mainstream opposition thinking on the issue.

If, as the reports suggests, the BBC were to spend less on sport, the obvious implication is the majority of viewers would potentially lose the chance to see our top sportsmen and women in action.

Less spent by the BBC on sport would also mean Rupert Murdoch's Sky Sports would have less competition and, therefore, pay less to screen top class events on their satellite and cable channels. Of course this could be the real reason for the proposal, the prize perhaps being their support for the Conservatives at the next election.

However, it will also mean that the sports themselves have less income and, while that might not be too much of a problem for football's Premiership, other sports are already struggling to survive and less money would probably just mean less to invest in sport at amateur and junior levels.

Nottingham's Sustainable Communities Plan emphasises the value of promoting the City, its businesses and attractions and the healthy lifestyles, involvement in top quality sporting events can encourage.

Less sport on terrestrial TV will mean far fewer people seeing these events and, therefore, less benefit for the City and its residents."

Nottingham becoming a “Fair Trade City”

In the absence of Councillor Newton the Lord Mayor resolved that this question should receive a written reply within five working days.

Councillor Newton to the Portfolio Holder for Environment and Climate change:-

"Would the Portfolio Holder comment on progress made towards Nottingham becoming a Fair Trade City and inform the Council of events taking place during the forthcoming Fair Trade Fortnight?"

Replacement for the Victoria Leisure Centre

Councillor Williams asked the following question to the Portfolio Holder for Leisure, Culture and Customers:-

“Thank you my Lord Mayor.

Could the Portfolio Holder for Leisure, Culture and Customers comment on progress on the replacement of Victoria Leisure Centre in St Anns?; this was the first question that was sent in by the way".

Councillor Trimble replied as follows:-

“Thank you Lord Mayor and can I thank Councillor Williams for his question.

This Labour Group has made a commitment to build a new facility in line with the choice made by the majority of local residents. Since that decision was made, the design team has been working to ensure that we can deliver this without unnecessary delays. The design team are now at an advanced stage of developing designs which will be ready to submit for planning approval very soon. As I said earlier, there is no change of use, the only obstacles to these proposals proceeding would be on aesthetics and that will be a decision for Development Control Committee. We are, therefore, working towards a closure date of 1 April 2010 so that, as we always said, work can start as soon as possible on the new leisure centre. That is why it makes sense to twin track the investigative work needed and the preparatory work needed and the

planning process. We expect the facility to be open in 2012. This will provide a six-lane, 25-metre family swimming pool with a separate children's pool and a fun splash play area for younger children, a new café/retail space, and fitness and health suites, will also be included, whilst retaining the clock tower and the façade either side will be kept.

Our experience to date from improvement works already undertaken around the City through the leisure transformation programme is that attendances, usage and visits increase dramatically. In the case of John Carroll Leisure Centre we have seen a 49.86% increase in attendances (66,539 additional added visits), at Southglade Leisure Centre an increase of 60.25% (138,502 additional annual visits) and at Ken Martin Leisure Centre a 16.73% increase (29,624 additional added visits) following investments and improvements made to those facilities.

When Ken Martin re-opened we had to put on an extra ten aerobic classes that weren't there before. We had to hire extra life guards to cope with the extra demand for swimming and hire extra staff to cope with the increased demand for flexible fitness. Two years later, it still has the largest membership of flexible fitness with over 1,000 members and we have had to increase the size of the car park, in order to cope.

This Labour Group has been investing in a £32 million Leisure Centre transformation programme, a programme that most cities up and down the country could only dream of, whilst many other Cities have been closing their leisure facilities.

We have implemented this Labour Government's free swimming programme plan with over 46,000 young people and over 33,000 people over 60 benefiting from it. During the school holidays, in partnership with One Nottingham, we are operating a zone whereby young people are taking part in structured sport activity all day during all of the school holidays for only 50 pence a day, thus seeing queues outside the doors and I also received a text message from a senior officer stating that our leisure centres were rammed full during the school holidays.

Lord Mayor, the investment we are making in a new Victoria Leisure Centre will provide a first class facility for the citizens of St. Ann's and Sneinton. The new centre will broaden the opportunity for some of our most deprived communities. The new Victoria Leisure Centre when it re-opens will be the best leisure centre in the City and Councillor Sutton's stance will look very, very silly at that point. He has absolutely no vision

whatsoever and, of course, if Councillor Sutton had his way there wouldn't be a new Victoria Leisure Centre."

Wilford Library

Councillor Price asked the following question to the Portfolio Holder for Resources, Development and Reputation:-

"Would the portfolio holder not agree that library provisions in Wilford are worth more than one copy of the Nottingham Arrow, considering both cost £38,000? Would you reconsider increasing Councillor Trimble's £4.5 million library budget to enable Wilford Library to stay open for another year?"

Councillor Chapman replied as follows:-

"Thank you Lord Mayor and can I thank Councillor Price for his question.

Look, I understand the concern about closure of a library and it is something none of us feel comfortable about, because actually some of us came into politics to provide precisely those sort of facilities, so it is not easy and none of us relish the position that we're in. Having said that, there is a serious problem with the Wilford Library, which the Area Committee recognises, that it is small and the participation in the area is small, and it has got very high relative costs - the second highest in the City - and there is a decline; and that decline of membership and usage has not been halted. Despite the valiant efforts of the Area Committee pumping extra money in to try to keep the opening hours longer, it still hasn't halted the decline and then you have the limitation of the building itself and what the future holds as a modern library. So putting all that together, and then the idea of putting another £38,000 into it for one year is not resolving the long term problem. It is putting off the evil day and, therefore, I wouldn't be in agreement to putting £38,000 into keeping it open for another year. But, even if we did have a spare £38,000, I am not sure that every other ward in the City, couldn't find equally valid, if not more valid usage for it. So there is no justification particularly for ring-fencing any spare "floating" £38,000 for Wilford, compared with anywhere else, nor is it any reason for discriminating against it. It's just that we've all got £38,000 worth of schemes, we would rather like to spend money on.

Secondly, I am fairly sure if we ask the Library service, if you had an extra £38,000, would you think it is best spent on putting it in Wilford Library? I am fairly sure that the answer would be no. So, unfortunately, I cannot agree, and I don't think we can agree to your proposal. What I would hope would happen, and this is where I think there is a genuine opportunity for Wilford, is to look at whether there can be some community management of that, and I think that any spare cash from the Area Committee, that can be put into supporting that, I think would be the best way of spending any future resources on Wilford Library and it is something that I think would be a fine experiment to see if it could work. It is part of my government's policy to hand over responsibility for some community assets to the community and I am fairly sure, actually, that it's part of your party's proposals and I know certainly, part of the Liberal party's proposal. It is one area where we have all got a common cause, and if we can make that work, and I believe you can make it work, I have seen some rather miraculous things happen in my own ward in Aspley from a much more difficult base than in Wilford, so I am rather hoping that will be the solution, and I am rather hoping that actually, to do that will bring access to funds beyond which the Council cannot access and I think you will get the full Council support if you were to lead a campaign to do that and I would hope that that's where we could go, rather than looking retrospectively at keeping a facility open which I don't think has got a long life."

Icesave

Councillor Morley asked the following question to the Portfolio Holder for Resources, Development and Reputation:-

"Following reports of the downgrading of local authorities as creditors, and ongoing events concerning Icesave, could the portfolio holder update us regarding the retrieval of funds invested in Icelandic banks?"

Councillor Chapman replied as follows:-

"Thank you very much and thank's for the question - and also thanks for the courtesy of the notification of the question, that's really appreciated as it is a delicate issue.

The Icesave agreement relates to money lost by individual investors, what we call the retail sector of banking. The UK government reimbursed all UK depositors in full and is trying to recover the money, and rightly so,

from the Icelandic government, through the loan agreement. The Icelandic President has vetoed this loan, unsurprisingly, and is currently preparing for a national referendum on the matter.

The City Council has no deposits in Icesave and the issue, because it's the retail side of banking and not the wholesale that we deal with, has no impact on the City Council at all.

As for the local authority creditor status, the return of deposits with Icelandic banks is fairly lengthy and complex and, at present, Glitnir Bank Winding Up Board has rejected claims of local authorities for priority status, of course that's what we have been arguing, all 140 of us. Our legal advisors are challenging this position and have indicated that they are confident of establishing priority status and recovering 100% of the deposits in Glitnir. I do have personal links with the man who is leading on behalf of the LGA, because I am on the same board, and he is fairly confident that we will eventually overturn the view of the Glitnir Board.

Moreover, Landsbanki Winding Up Board have confirmed that local authority deposits have been granted priority status, so that obviously plays into our hands.

Heritable Bank, as you well know, is being dealt with under UK law. Thank you Gordon Brown, for freezing all their assets under the anti-terrorism law at the time and as a consequence we have had £4.2 million back. Thank you Gordon for that £4.2 million, that we may not otherwise have had he not used, and possibly even abused, anti-terrorism law.

So, based on the latest advice received, the likely recovery percentages for local authority deposits, assuming priority creditor status, are:

Heritable Bank: 79 – 85% - but I have been told, the people dealing with it are fairly prudent, so we may get a bit more than that;
Glitnir Bank: 100%; and,
Landsbanki Bank: 88%

Thank you."

Street Traders

Councillor Davie asked the following question to the Portfolio Holder for Resources, Development and Reputation:-

"Can the portfolio holder explain how this City Council can profess to support small businesses while at the same time banning street traders from the City Centre?"

Councillor Chapman replied as follows:-

"I think you've got a supplementary for me before I have opened my mouth.

OK, we have not got into this review simply because we woke up one morning and thought what a good idea. It's not been done on a whim or any sort of malice in fact, quite the opposite. What we have been doing is responding to businesses - and I personally, and I am sure it's the same for every other Labour member - we do appreciate the need for street trading and the fact that it does add to the vitality of any city.

However, the reason why we are having to deal with this issue is because of objections from other businesses, and there are two categories of business, that object to street trading, in certain circumstances. Sometimes, it is the larger stores, who find a street trader outside and who they believe has an impact on their trade, and we have all been approached by some of the major developers, the people who actually want to invest in the City saying "... look, this is an issue...". In fact, I have been personally approached about particular street trading and we do have to listen to that, because these are people investing, very often many millions, in the City.

The second category of people who are concerned, and, again, it is businesses, by street trading, are other people who are selling similar goods. They are genuinely concerned because what they object to is the fact that they are having to pay higher overheads, and I have been approached on a number of occasions by other people, especially when we have done quick lettings in years past over Christmas from some of the basic stores who have had to go through January, February and all the other months of the year, the lean months, to street trading in the fertile period of Christmas. There is quite a bit of resentment. I saw this the other week, when we opened up a kiosk, in order to give an outlet to local contemporary arts and people who are doing design to sell their goods, and I went and spoke to them and they said they had actually

faced a bit of hostility from traders nearby, because they were selling goods without having to pay the overheads everybody else was. So, what we have been trying to do, and I think we will be very successful at it, is getting a line of best fit between the interests of street traders, the interests of the large inward investors and the interests of the small businesses who are feeling threatened by this, and this is the purpose of this review.

There are only going to be nine street traders affected. A number of sites will be affected and, for each of those, we are in individual negotiations to try and find sensible alternative ways through, so it is not affecting everybody. It is affecting currently only nine existing traders, with whom we are having conversations, but it is not us that have decided. It is business that has brought this upon business, not us who have brought it upon business.

Planning, and Changes to the Local Environment

The following question by Councillor Spencer to the Portfolio Holder For Neighbourhood Regeneration, was submitted for a written response within five working days:

"Does the portfolio holder agree with me that current planning rules regarding permitted development, particularly in relation to porches, means that the look of a neighbourhood can be easily and permanently changed without any opportunity for either local authorities or neighbours to object? And in his view is there anything we as a local authority can do about this?"

66 WORKING NEIGHBOURHOOD'S FUND - NOTTINGHAM JOBS FUND DECISION BY THE EXECUTIVE BOARD UNDER THE SPECIAL URGENCY PROCEDURE

The report of the Leader of the Council as set out on pages 332 to 333 of the agenda was submitted.

RESOLVED on the motion of Councillor Collins, seconded by Councillor Ahmed, that the decision of the Executive Board on 19 January 2010 in respect of the Working Neighbourhood's Fund – Nottingham Jobs Fund be noted.

67 CHANGES TO COMMITTEE MEMBERSHIPS - APPOINTMENTS AND CONDITIONS OF SERVICE COMMITTEE AND CITY CENTRE AREA COMMITTEE

RESOLVED that the following changes to the memberships of Committees be noted:-

- (i) the appointment of Councillor K Williams as a member of the Appointments and Conditions of Service Committee in place of Councillor D Trimble;**
- (ii) the appointment of the following Councillors as Labour Group Substitutes on the following Committees:**

Appointments and Conditions of Service Committee:

Councillor J Hartshorne

City Centre Area Committee:

Councillors M Bryan, H James, G Khan and K Williams

The meeting concluded at 4.30 pm

Council Questions requiring written responses

The following response was circulated to all members of the City Council on 26 February 2010:

Councillor Newton asked the following question of the Portfolio Holder for Environment and Climate change:-

"Would the Portfolio Holder comment on progress made towards Nottingham becoming a Fair Trade City and inform the Council of events taking place during the forthcoming Fair Trade Fortnight?"

Councillor Bull replied as follows:-

Progress made on Nottingham becoming a Fairtrade City

There are five goals to becoming a Fairtrade City and the City of Nottingham has made exceptional progress towards achieving this status in the near future.

Goal 1

Local Council passes a resolution supporting Fairtrade.

The motion was passed in June last year, supporting Nottingham becoming a Fairtrade City, and in addition to this all our tea and coffee served at Civic Functions is Fairtrade, and the Council has corporate contracts in place for using Fairtrade products.

Goal 2

A range of at least two Fairtrade products are readily available in the areas shops and served in local cafes / catering establishments

The city has met its targets with regards to this, as a city we have to 35 retail establishments, and 18 catering establishments. The steering group is continuing to add retailers & caterers to this list.

Goal 3

Fairtrade products are used by an appropriate number of local work places / community organisations

We have secured a flagship employer with Nottingham City Primary Care Trust committing to use Fairtrade products. The steering group has also asked the One Nottingham board to consider approval to use Fairtrade products. One Nottingham has also donated £250 towards the events planned for Fairtrade Fortnight. The City steering group are also making an approach to Nottingham City Transport.

Goal 4

Attract a media campaign and popular support for the campaign

There has been a number of press releases and information regarding Fairtrade, both in the Nottingham Evening Post, and the City Residents magazine the Arrow. There are Fairtrade pages on our webpage's. Most of the work around this goal is focussed on the forthcoming Fairtrade Fortnight, which we have 6 events planned being:

Fairtrade Roadshows

22nd February – Dryden Street Market

24th February – Hyson Green Market

26th February – Clifton Market

2nd March – Bulwell Market

6th March – Nottingham Speakers Corner, Fairtrade Debate

Fairtrade & Local Food Evening

4th March – Broadway Cinema

500 Flyers have been printed and distributed to promote these events, and a press release regarding Fairtrade Fortnight, will be going out next week (w/c 15th February)

Goal 5

A local steering group is convened to ensure progress and continued support

The City Steering Group was convened last year, and is represented by residents, the business sector, international development forum, education establishments, and ourselves, and meets on a regular basis.

It is expected that shortly after Fairtrade Fortnight (22 February – 7 March) the City Steering Group will be submitting the application to the Fairtrade Foundation for Fairtrade City status.

Councillor Spencer asked the following question of the Portfolio Holder For Neighbourhood Regeneration:-

"Does the portfolio holder agree with me that current planning rules regarding permitted development, particularly in relation to porches, means that the look of a neighbourhood can be easily and permanently changed without any opportunity for either local authorities or neighbours to object? And in his view is there anything we as a local authority can do about this?"

Councillor Clark replied as follows:-

Current planning rules mean that most porches (those covering less than 3 sq m, less than 3 m high and more than 2 metres away from a road) do not normally require planning permission. This is part of a wide range of freedoms given to householders to carry out alterations or extensions to their properties without the need to submit applications for local authority approval.

The rules for householder 'permitted development' apply nationally and were revised in 2008 following a comprehensive review, but the controls over porches were not amended and have remained unchanged for many years. Permitted development rules have been designed to afford reasonable flexibility to homeowners to carry out smaller works to their own requirements and taste, whilst at the same time ensuring that more significant developments are subject to proper consideration through the planning process.

Porches falling within permitted development under planning rules are also exempt from the need for building regulations approval, provided that the original external door remains in place.

Whilst the construction of a porch will inevitably affect the appearance of a house, the size limits are intended to ensure that the impact on the character of the surrounding area is limited. The extent of any impact will depend on the nature of the surroundings but in my opinion the existing rules strike a reasonable balance.

I should add that where additional controls are necessary, such as within conservation areas, mechanisms are already available to restrict permitted development rights. However, national policy advice is that such controls should be used only exceptionally since they limit a right granted by Parliament.

In the light of the recent review it is unlikely that the government would be prepared to revisit the rules in relation to porches.

Of course, if Councillor Spencer knows of any breaches of the current rules, I would expect that he would have taken these up with the appropriate City Council officers without delay.

At the meeting of the City Council held on 14 December 2009, Councillor Davie asked the following question of the Deputy Leader of the Council:-

"Does the portfolio holder share my concern over the lack of manufacturing jobs in Nottingham, as identified in the Greater Nottingham Economic Review 2009 (9% of jobs in 2007), and further more can he outline what activity he is undertaking to encourage manufacturing jobs back into Nottingham?"

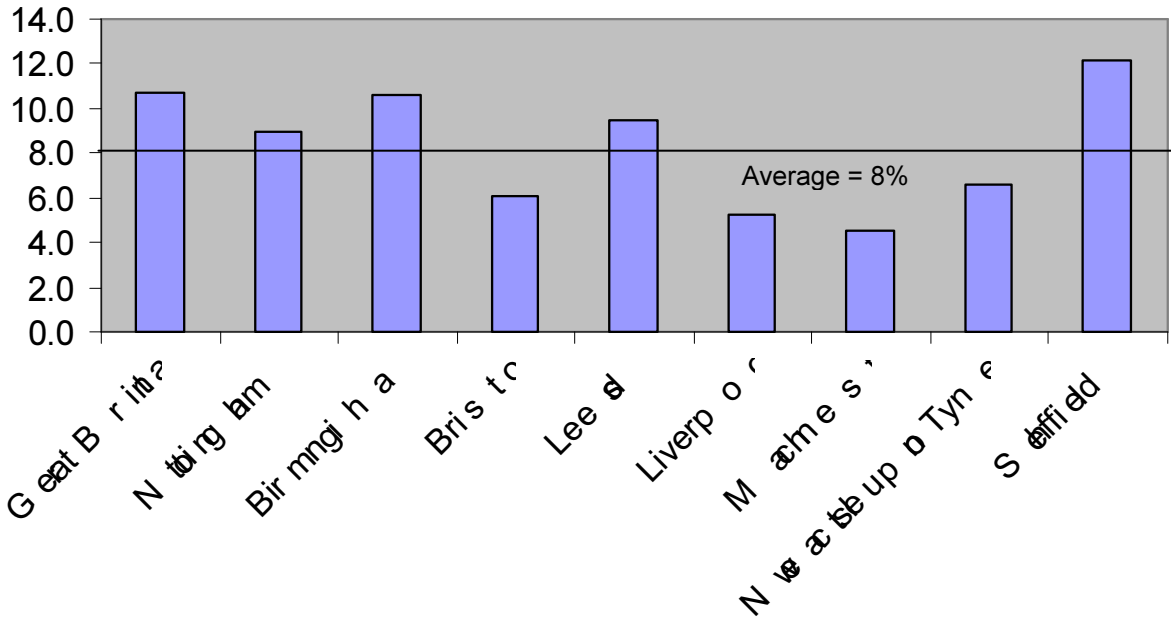
Councillor Chapman replied as follows:

Response

I share the Councillor's concern of the continued reduction in the manufacturing industry not only within Nottingham, but the country as a whole. As the councillor will be aware this is a global problem with the emerging economies offering a much more cost effective option for large scale manufacturing.

As the chart below shows, Nottingham is fairing better than many of the other core cities and our rate of 9.0% is above average.

% of Manufacturing Jobs in Core Cities



This is no reason for complacency and we will continue to work to retain and encourage manufacturing in the city. Our focus is and has to be on high level technology, engineering and manufacturing as that is where the country's and city's advantage lies. As part of our sector strategy we are continuing to stimulate those sectors which can bring this type of manufacturing to the city in particular around the Creative and Design, and the Science and Technology sectors. As well as this general approach we are specifically working with the science parks within Nottingham to build a manufacturing base around the new "clean" and "greentech" industries.